

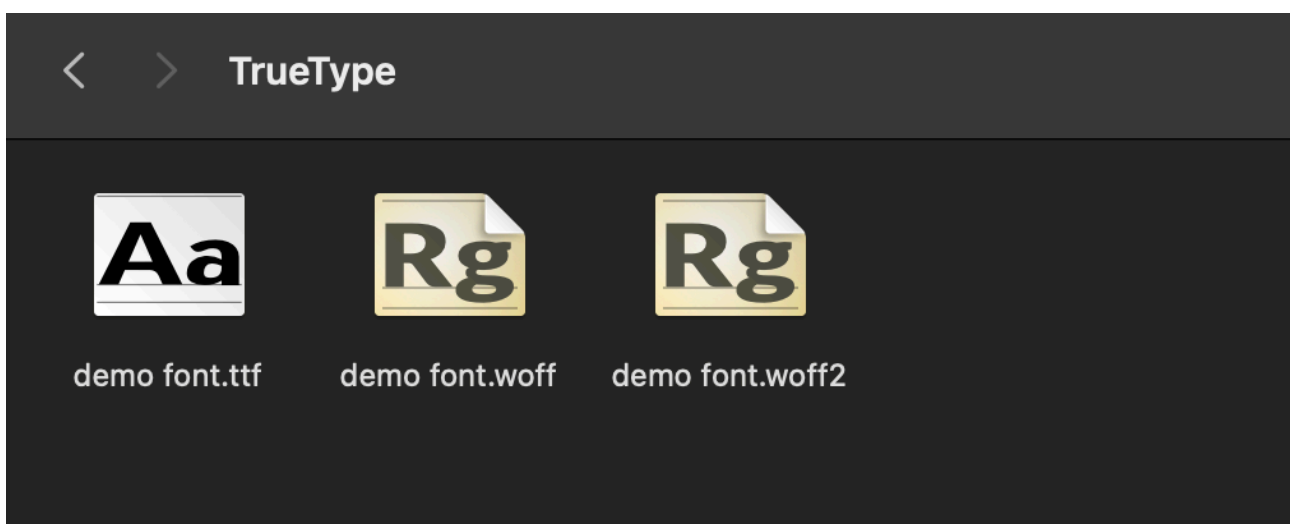
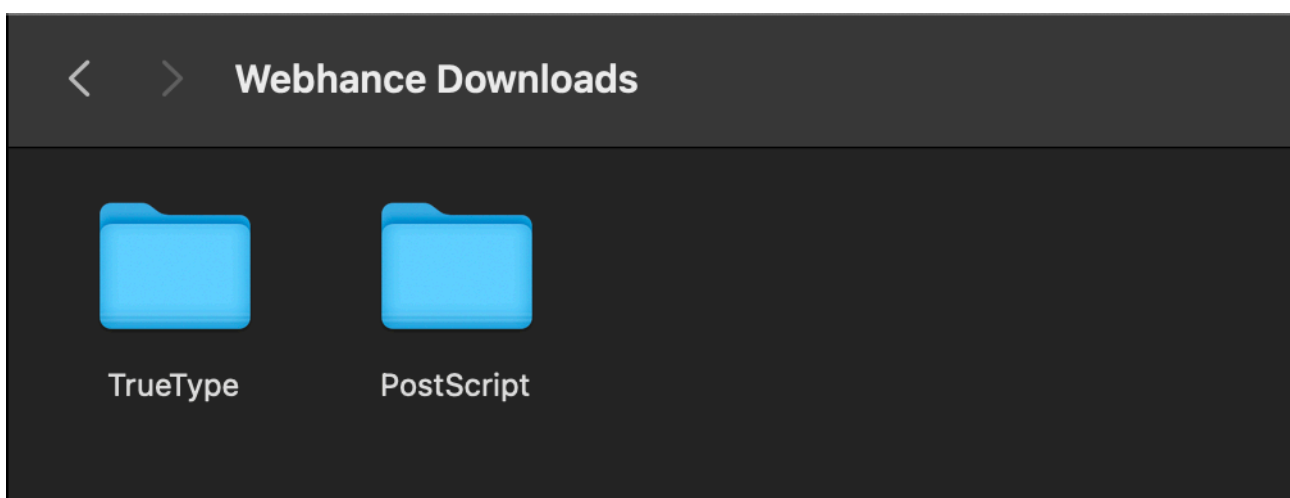


Webhance.

Font Documentation

Welcome to Webhance Fonts! We are dedicated to providing you with high-quality fonts to enhance your creative projects. Below, you'll find important instructions on how to install fonts on both Mac and Windows, how to use web-fonts, and details on how to request additional support, customisation, and feature additions.

INSTALLING FONTS:



Mac:

- TTF and OTF Fonts:
- Locate the downloaded TTF or OTF font file on your Mac.
- Double-click the font file to open it in Font Book.
- Click "Install Font" to add it to your system.

Windows:

- TTF and OTF Fonts:
- Locate the downloaded TTF or OTF font file on your PC.
- Right-click the font file and select "Install" from the context menu.

USING WEB-FONTS:

Web-fonts:

- Include the provided web-font files (WOFF, WOFF2) in your website's directory.
- Use the appropriate CSS code to integrate the web-font into your website.

Example css

Webhance Studio

```
@font-face {  
  font-family: 'YourFontName';  
  src: url('yourfont.woff2') format('woff2'),  
       url('yourfont.woff') format('woff');  
  /* Additional font properties */  
}
```

Requesting Support, Customisation, and Feature Additions:

Welcome to Webhance Fonts! We are dedicated to providing you with high-quality fonts to enhance your creative projects. Below, you'll find important instructions on how to install fonts on both Mac and Windows, how to use web-fonts, and details on how to request additional support, customisation, and feature additions.

SUPPORT:

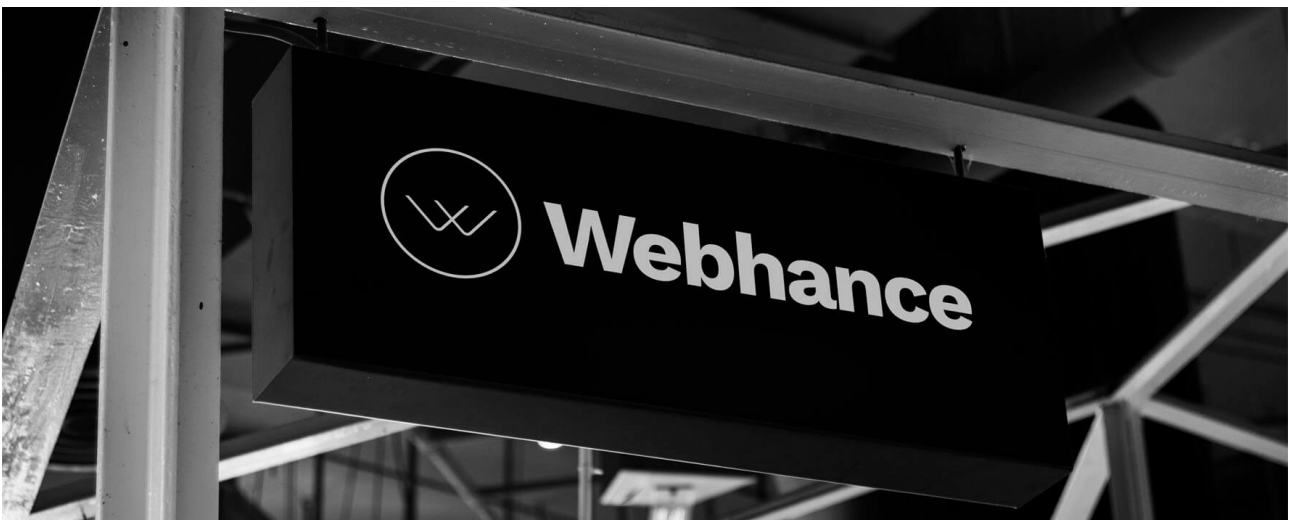
For any technical issues or questions, please contact us at hello@webhance.net. We strive to provide prompt assistance to ensure a seamless experience with our fonts.

CUSTOMIZATION:

If you require customisations such as additional weights or characters, feel free to reach out to us. Our team will work with you to accommodate your customisation needs.

FEATURE ADDITIONS:

We value your feedback and welcome suggestions for feature additions or improvements to our fonts. Let us know your ideas, and we'll consider them for future updates.



GENERAL INFORMATION

PostScript and TrueType are both font formats commonly used in digital typography. Here's a brief overview of each:

PostScript (Type 1):

- Developed by Adobe Systems in the 1980s.
- PostScript fonts are outline-based, meaning they describe each character using mathematical equations and vectors.
- They are widely used in printing and graphic design.
- PostScript fonts typically have two files: one for the outline data (with a .pfb or .pfa extension) and one for font metrics (with a .afm extension).
- These fonts were originally designed for professional printing and were commonly used with PostScript printers.

TrueType:

- Developed jointly by Apple and Microsoft in the late 1980s and early 1990s.
- TrueType fonts are also outline-based, describing characters with mathematical equations and vectors.
- They are commonly used in both print and screen environments.
- TrueType fonts typically have a single file that contains both outline data and font metrics (with a .ttf extension).
- TrueType fonts gained popularity due to their compatibility with both Mac and Windows operating systems.